

Quick Start Guide

TransPort® WR31



90001465-88 C

Welcome to your Digi product

Get started: This guide helps you with initial product setup. Need more? Find additional product support at www.digi.com/support/TransPortWR31. Or connect to the online documentation by scanning this code:



Digi Technical Support: Digi offers multiple support plans to help you get the most out of your product. For information on Technical Support plans and pricing, contact us at 877.912.3444 or visit www.digi.com/support.

Documentation Feedback: To provide feedback on this documentation, send your comments to techcomm@digi.com.

1 Verify your components

Included equipment



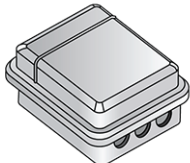
TransPort WR31



DIN rail clip

Optional equipment

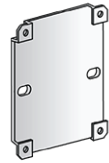
The TransPort WR31 can be mounted directly to a wall using the WR31 Wall Mount Bracket (76000966). Advanced environmental protection requires a customer specified NEMA enclosure.



NEMA enclosure



TransPort WR31 Wall mount bracket
Digi part number 76000966



Mounting plate

Required additional equipment



SIM card(s) - Mini-SIM (2FF) size



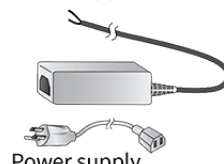
Ethernet cable



Phillips-head screwdriver



Flathead screwdriver



Power supply
Digi part number 76000736,
available on www.digi.com,
or DIN rail power supply



Cellular antenna(s): Type SMA
Available on www.digi.com:
4G LTE antenna 2-pack: 76000926 -2
3G LTE antenna 2-ack: DC-ANT-DBDP3-2

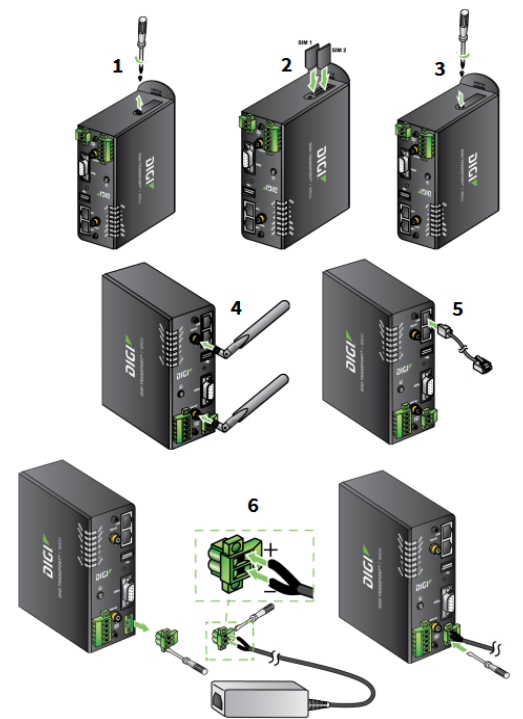


Personal computer

Verify that you have all included equipment. If any item is missing or damaged, contact your supplier.

2 Connect the hardware

- Using a Phillips-head screwdriver, remove the SIM slot cover from the underside of the unit.
- Insert the SIM card(s) into the SIM sockets. **SIM 1** is near the middle of the unit, and **SIM 2** is near the outside of the unit. Insert the chamfered end of the SIM card first.
- Replace the SIM slot cover.
- Connect the cellular antenna to the **WWAN PRI** connector on the unit. If the unit is equipped with a secondary cellular antenna connector, connect it to the **WWAN SEC** connector.
- Connect one end of the Ethernet cable to the **LAN 0** port on the unit and the other end to a LAN port on a PC.
- Connect the power supply. If using the optional power supply:
 - Remove the pluggable connector from the unit, loosening the screws for the locking flanges as needed.
 - Connect the wires of the power supply to the terminals, following the instructions on the power supply.
 - Secure the terminal screws.
 - Reconnect the pluggable connector to the unit.
 - Secure the screws on the locking flanges.
 - Connect the AC power to a power source.



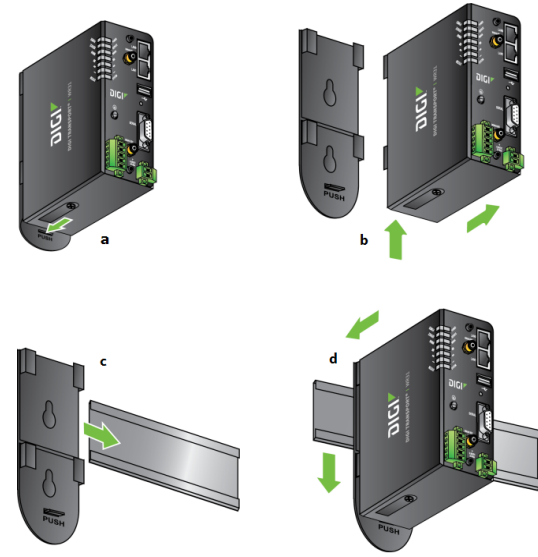
For additional hardware installation options and instructions, see the *TransPort User Guide* online, at www.digi.com.

- Mount the TransPort WR31 on a DIN rail, directly onto the wall, or in a NEMA enclosure.

Note Position the Digi TransPort WR31 via DIN rail mounting brackets, wall-mount, or rackmount, in a location with adequate ventilation. The unit is designed for indoor use. **Do not expose the unit to extreme heat or cold, strong magnetic fields, or liquids.**

For DIN rail mounting:

- Apply pressure to the DIN clip release tab.
- Slide the TransPort WR31 up; it should release from the clip and fall forward.
- Slide or snap the DIN clip onto the DIN rail.
- Align the TransPort WR31 with the guides on the DIN clip; reverse Step b and slide the device into the DIN clip guides and down until it clicks into place.



For wall-mounting or NEMA enclosure mounting:

Purchase the TransPort WR31 Wall Mount Bracket (Digi part number 76000966) and NEMA enclosure equipment.

- When the unit is powered up, the **POWER** LED illuminates and the unit starts a series of diagnostic self-tests. During this process, one or more of the other LEDs will flash to show that the unit is busy. See **Section 4, View the TransPort LEDs and startup states**, for more information on LEDs. When the flashing stops, the unit has completed the self-test diagnostics and is ready to be configured.

3 Run the Getting Started Wizard

If your PC is configured to automatically get an IP address, it can get an IP address from the TransPort WR31. Otherwise, make sure your PC can connect to the network **192.168.1.0 (255.255.255.0)**.

- Enter **192.168.1.1** into the address bar of the web browser.
- The first page of the TransPort WR31 Getting Started Wizard appears. This wizard guides you through initial configuration of your TransPort WR31 device. Note the default username and password to log in to the TransPort device are **username** and **password**.
 - To run the wizard, click **Get Started**.
 - To manually configure the TransPort device, click **Skip Wizard**.
- The Getting Started Wizard prompts you to enter your Digi Remote Manager username and password. If you do not already have a Digi Remote Manager account, go to <https://remotemanager.digi.com> to sign up for a free trial.

4 View the TransPort LEDs and startup states

■ POWER LED:

Off: No power

Green: TransPort device is powered

■ SERVICE LED:

Off: No WWAN network connection

Green: WWAN network connection

Flashing: WWAN traffic being transmitted or received

■ WWAN LED: Indicates the presence and level of cellular service running on the device.

Off: No cellular service

1 blink: GPRS mode

2 blinks: EDGE mode

3 blinks: UMTS mode

4 blinks: HSDPA mode

5 blinks: HSUPA mode

6 blinks: LTE mode

■ SIGNAL LEDs: Indicate strength of cellular signal.

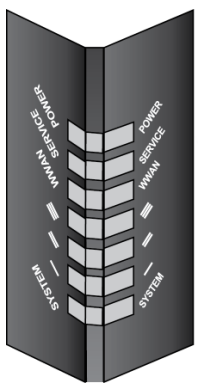
3 LEDs: Excellent

2 LEDs: Good

1 LED: Fair

0 LEDs: Poor or no signal

■ SYSTEM LED: Reserved for user-defined functions.



After the Getting Started Wizard completes, the TransPort web interface appears. For additional configuration, use the web interface and refer to the *Digi TransPort User Guide* and Application Notes available at www.digi.com/support/TransPortWR31.